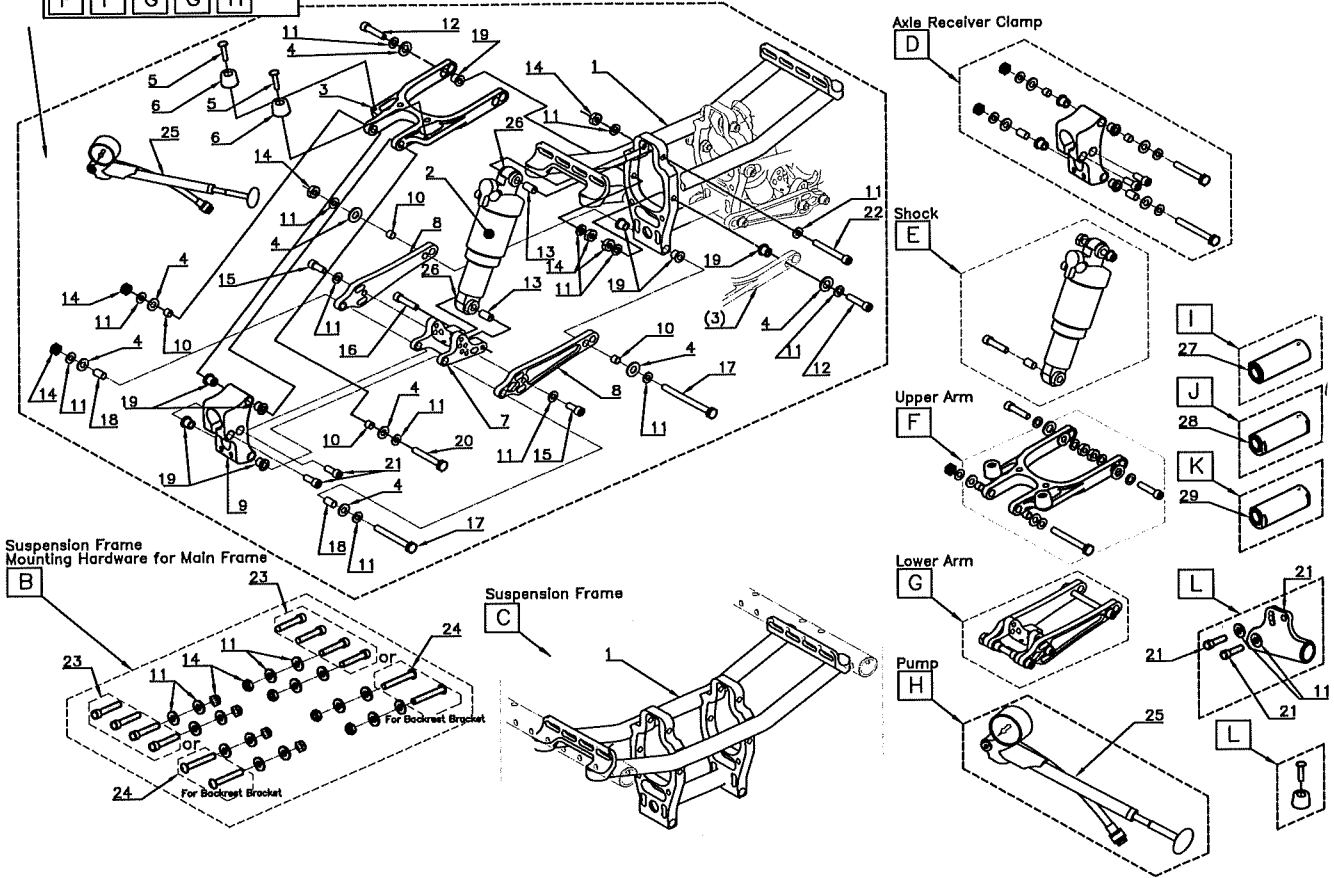
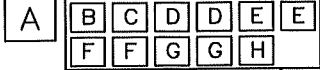


Air Ride System 2nd Gen

COLOURS
IN MOTION

Ver.1 05/03/18
Section 3401

Air Suspension Unit Assembly



| POS | Assy # | # | Parts # | QTY | Color | Remark | MSRP | NOTE | | | | | |
|-----|----------|----|----------------|-------------------|-------|---|----------------------------|---|-------------|-------------|----------------------|---------------------|-------------|
| A | 3401-01A | - | | 1 | - | ARS Unit 2nd Gen With Air-Pro Assembly *Without Axle Receiver | All Black Color /1set | 1set/1chair | | | | | |
| | | | | | | Powder Coated Color 1set | 1set/1chair | | | | | | |
| | | | | | | one color only | | | | | | | |
| | | | | | | Polish Color 1set | 1set/1chair | | | | | | |
| B | 3401-01B | | 23 | 0313-300 | 8 | Sil | 1/4"-20 L:1 1/2" SHCS | 1set 1set/1chair | | | | | |
| | | | 24 | 0112-301 | 4 | Sil | 1/4" -20 L:2" BHCS | | | | | | |
| | | | 11 | 0277-300 | 16 | Sil | 1/4" Washer | | | | | | |
| | | | 14 | 0278-300 | 8 | Sil | 1/4"-20 HLN | | | | | | |
| C | 3401-01C | 1 | - | 1 | - | 13" Seat Width | Black Color | 1pcs 1pcs/1chair | | | | | |
| | | | - | 1 | - | 14" Seat Width | 1pcs | | | | | | |
| | | | - | 1 | - | 15" Seat Width | Powder Coated Color | | | | | | |
| | | | - | 1 | - | 16" Seat Width | | | | | | | |
| | | | - | 1 | - | 17" Seat Width | 1pcs | | | | | | |
| | | | - | 1 | - | 18" Seat Width | Polish Color | | | | | | |
| - | 1 | - | 19" Seat Width | | | | | | | | | | |
| D | 3401-01D | | 9 | 05-17-008-002 | 1 | - | Axle Receiver Holder | 1pcs | 1pcs/1chair | | | | |
| | | | 19 | 6338K412 | 4 | Br | F.S.Bearing OD3/8" x L3/8" | 1set | 2set/1chair | | | | |
| | | | 18 | 6391K127 | 2 | Br | S.Bearing OD5/16" x L1/2" | Powder Coated Color | 1set | 2set/1chair | | | |
| | | | 10 | 6391K126 | 2 | Br | S.Bearing OD5/16" x L1/4" | | | | | | |
| | | | 11 | 0277-300 | 4 | Sil | 1/4" Washer | 1set | 2set/1chair | | | | |
| | | | 4 | 0107-300 | 4 | Sil | 1/4" Large Washer | Polish Color | 1set | 2set/1chair | | | |
| | | | 14 | 0278-300 | 2 | Sil | 1/4"-20 HLN | | | | | | |
| | | | 17 | 0390-301 | 1 | Sil | 1/4"-20 L:3 1/4" HHCS | 1set | 2set/1chair | | | | |
| | | | 20 | 0270-300 | 1 | Sil | 1/4"-20 L:2 3/4" HHCS | Polish Color | 1set | 2set/1chair | | | |
| | | | 21 | 0110-300 | 2 | Sil | 1/4"-20 L:1" SHCS | | | | | | |
| E | 3401-01E | | 2 | 0194-120 | 1 | - | Fox Float DPS | 4 pc total for ea. shock 1set 2set/1chair | | | | | |
| | | | 26 | 0194-125 | 2 | - | Mounting Hardware | | | | | | |
| | | | 13 | 6391K401 | 2 | Br | S.Bearing OD5/16" x L3/4" | | | | | | |
| | | | 11 | 0277-300 | 2 | Sil | 1/4" Washer | | | | | | |
| | | | 16 | 0115-300 | 1 | Sil | 1/4"-20 L:1 3/4" SHCS | | | | | | |
| | | | 22 | 0376-300 | 1 | Sil | 1/4"-20 L:2" SHCS | | | | | | |
| | | | 14 | 0278-300 | 1 | Sil | 1/4"-20 HLN | | | | | | |
| | | | F | 3401-01F | | 3 | 05-17-009-0A | | 1 | - | New Suspension Arm B | Black Color | |
| | | | | | | 5 | 0105-310 | | 2 | Sil | #10-32 L:7/16" PPHS | 1set | 2set/1chair |
| | | | | | | 6 | 9540K709 | | 2 | Blk | Round Bumper | Powder Coated Color | 1set |
| 19 | 6338K412 | 2 | | | | Br | F.S.Bearing OD3/8" x L3/8" | | | | | | |
| 10 | 6391K126 | 2 | | | | Br | S.Bearing OD5/16" x L1/4" | Polish Color | 1set | 2set/1chair | | | |
| 11 | 0277-300 | 6 | | | | Sil | 1/4" Washer | | | | | | |
| 4 | 0107-300 | 4 | | | | Sil | 1/4" Large Washer | Polish Color | 1set | 2set/1chair | | | |
| 14 | 0278-300 | 3 | | | | Sil | 1/4"-20 HLN | | | | | | |
| 20 | 0270-300 | 1 | | | | Sil | 1/4"-20 L:2 3/4" HHCS | Polish Color | 1set | 2set/1chair | | | |
| 12 | 0541-320 | 2 | | | | Sil | 1/4"-20 L:1 1/4" SHCS | | | | | | |
| G | 3401-01G | | 7 | 0194-112 | 1 | Blk | Mount (Black color only) | Black Color | | | | | |
| | | | 8 | 0194-114 | 2 | - | Suspension Arm A | 1set | 2set/1chair | | | | |
| | | | 10 | 6391K126 | 2 | Br | S.Bearing OD5/16" x L1/4" | Powder Coated Color | 1set | 2set/1chair | | | |
| | | | 18 | 6391K127 | 2 | Br | S.Bearing OD5/16" x L1/2" | | | | | | |
| | | | 13 | 6391K401 | 1 | Br | S.Bearing OD5/16" x L3/4" | Polish Color | 1set | 2set/1chair | | | |
| | | | 19 | 6338K412 | 2 | Br | F.S.Bearing OD3/8" x L3/8" | | | | | | |
| | | | 11 | 0277-300 | 6 | Sil | 1/4" Washer | Polish Color | 1set | 2set/1chair | | | |
| 4 | 0107-300 | 4 | Sil | 1/4" Large Washer | | | | | | | | | |
| H | 3401-01G | | 15 | 0501-300 | 2 | Sil | 1/4"-20 L:3 1/4" SHCS | 1set | 2set/1chair | | | | |
| | | | 14 | 0278-300 | 3 | Sil | 1/4"-20 HLN | | | | | | |
| | | | 17 | 0390-301 | 2 | Sil | 1/4"-20 L:3 1/4" HHCS | | | | | | |
| | | | 25 | 0194-121 | 1 | - | Fox 300 HP Pump | | | | | | |
| I | - | 27 | 05-13-006-0B | 1 | Blk | Axle Receiver 0" | 1pcs | 2pcs/1chair | | | | | |
| J | - | 28 | 05-13-007-0B | 1 | Blk | Axle Receiver 2" Camber | 1pcs | 2pcs/1chair | | | | | |
| K | - | 29 | 05-13-008-0B | 1 | Blk | Axle Receiver 4" Camber | 1pcs | 2pcs/1chair | | | | | |
| | | 30 | 05-11-014-0B | 1 | Blk | Anti-Tipper Mount | | | | | | | |